

Real-time Noise Data RTN1 (Food and Environmental Hygiene Department Depot)

Normal Day 07:00-19:00

Table with 10 columns of noise data entries. Each entry consists of a date and time (e.g., 27/8/2016 7:01) followed by a numerical value (e.g., 65). The data is organized in a grid format with 10 columns and 100 rows.

Normal Day 19:00-23:00

Sunday & Holiday

07:00-23:00

Table with 1 column of noise data entries. Each entry consists of a date and time (e.g., 27/8/2016 19:01) followed by a numerical value (e.g., 65). The data is organized in a single column with 100 rows.







Real-time Noise Data RTN1 (Food and Environmental Hygiene Department Depot)

Table with 4 columns of time and noise level data. Includes a section for 'Night time: 23:00-07:00'.











Real-time Noise Data      RTN1 (Food and Environmental Hygiene Department Depot)

26/9/2016 3:41	60
26/9/2016 3:46	61
26/9/2016 3:51	60
26/9/2016 3:56	60
26/9/2016 4:01	60
26/9/2016 4:06	60
26/9/2016 4:11	60
26/9/2016 4:16	60
26/9/2016 4:21	60
26/9/2016 4:26	60
26/9/2016 4:31	60
26/9/2016 4:36	60
26/9/2016 4:41	60
26/9/2016 4:46	61
26/9/2016 4:51	60
26/9/2016 4:56	60
26/9/2016 5:01	60
26/9/2016 5:06	60
26/9/2016 5:11	60
26/9/2016 5:16	61
26/9/2016 5:21	61
26/9/2016 5:26	61
26/9/2016 5:31	61
26/9/2016 5:36	61
26/9/2016 5:41	61
26/9/2016 5:46	62
26/9/2016 5:51	61
26/9/2016 5:56	61
26/9/2016 6:01	61
26/9/2016 6:06	62
26/9/2016 6:11	54
26/9/2016 6:16	54
26/9/2016 6:21	55
26/9/2016 6:26	57
26/9/2016 6:31	58
26/9/2016 6:36	58
26/9/2016 6:41	59
26/9/2016 6:46	60
26/9/2016 6:51	60
26/9/2016 6:56	60
26/9/2016 23:01	60
26/9/2016 23:06	58
26/9/2016 23:11	59
26/9/2016 23:16	60
26/9/2016 23:21	58
26/9/2016 23:26	59
26/9/2016 23:31	59
26/9/2016 23:36	59
26/9/2016 23:41	55
26/9/2016 23:46	56
26/9/2016 23:51	55
26/9/2016 23:56	54





















Real-time Noise Data      RTN2a (Hong Kong Electric Centre)

26/9/2016 3:41	53
26/9/2016 3:46	54
26/9/2016 3:51	54
26/9/2016 3:56	53
26/9/2016 4:01	53
26/9/2016 4:06	54
26/9/2016 4:11	54
26/9/2016 4:16	54
26/9/2016 4:21	54
26/9/2016 4:26	54
26/9/2016 4:31	54
26/9/2016 4:36	53
26/9/2016 4:41	53
26/9/2016 4:46	54
26/9/2016 4:51	54
26/9/2016 4:56	53
26/9/2016 5:01	54
26/9/2016 5:06	54
26/9/2016 5:11	54
26/9/2016 5:16	54
26/9/2016 5:21	54
26/9/2016 5:26	55
26/9/2016 5:31	55
26/9/2016 5:36	55
26/9/2016 5:41	55
26/9/2016 5:46	55
26/9/2016 5:51	56
26/9/2016 5:56	56
26/9/2016 6:01	55
26/9/2016 6:06	55
26/9/2016 6:11	57
26/9/2016 6:16	57
26/9/2016 6:21	57
26/9/2016 6:26	58
26/9/2016 6:31	58
26/9/2016 6:36	58
26/9/2016 6:41	58
26/9/2016 6:46	50
26/9/2016 6:51	52
26/9/2016 6:56	53
26/9/2016 23:01	42
26/9/2016 23:06	47
26/9/2016 23:11	43
26/9/2016 23:16	46
26/9/2016 23:21	37
26/9/2016 23:26	41
26/9/2016 23:31	51
26/9/2016 23:36	58
26/9/2016 23:41	58
26/9/2016 23:46	58
26/9/2016 23:51	57
26/9/2016 23:56	57



Real-time Noise Data RTN3 (Po Leung Kuk Yu Lee Mo Fan Memorial School)

Table with 12 columns: Date, Time, Noise Level (dB), and other noise data points. The table contains 95 rows of data, showing noise levels recorded from 27/8/2016 22:56 to 28/8/2016 15:56. Each row includes a date and time stamp, followed by noise level readings in dB, and a corresponding date and time stamp for a second set of readings.

















Real-time Noise Data RTN3 (Po Leung Kuk Yu Lee Mo Fan Memorial School)

26/9/2016 3:41	57
26/9/2016 3:46	58
26/9/2016 3:51	58
26/9/2016 3:56	57
26/9/2016 4:01	57
26/9/2016 4:06	58
26/9/2016 4:11	58
26/9/2016 4:16	57
26/9/2016 4:21	58
26/9/2016 4:26	58
26/9/2016 4:31	59
26/9/2016 4:36	58
26/9/2016 4:41	58
26/9/2016 4:46	59
26/9/2016 4:51	58
26/9/2016 4:56	58
26/9/2016 5:01	58
26/9/2016 5:06	58
26/9/2016 5:11	58
26/9/2016 5:16	59
26/9/2016 5:21	60
26/9/2016 5:26	60
26/9/2016 5:31	60
26/9/2016 5:36	60
26/9/2016 5:41	60
26/9/2016 5:46	61
26/9/2016 5:51	61
26/9/2016 5:56	60
26/9/2016 6:01	61
26/9/2016 6:06	61
26/9/2016 6:11	50
26/9/2016 6:16	50
26/9/2016 6:21	63
26/9/2016 6:26	54
26/9/2016 6:31	57
26/9/2016 6:36	57
26/9/2016 6:41	59
26/9/2016 6:46	60
26/9/2016 6:51	61
26/9/2016 6:56	61
26/9/2016 23:01	55
26/9/2016 23:06	54
26/9/2016 23:11	55
26/9/2016 23:16	54
26/9/2016 23:21	53
26/9/2016 23:26	57
26/9/2016 23:31	50
26/9/2016 23:36	53
26/9/2016 23:41	63
26/9/2016 23:46	63
26/9/2016 23:51	62
26/9/2016 23:56	62





















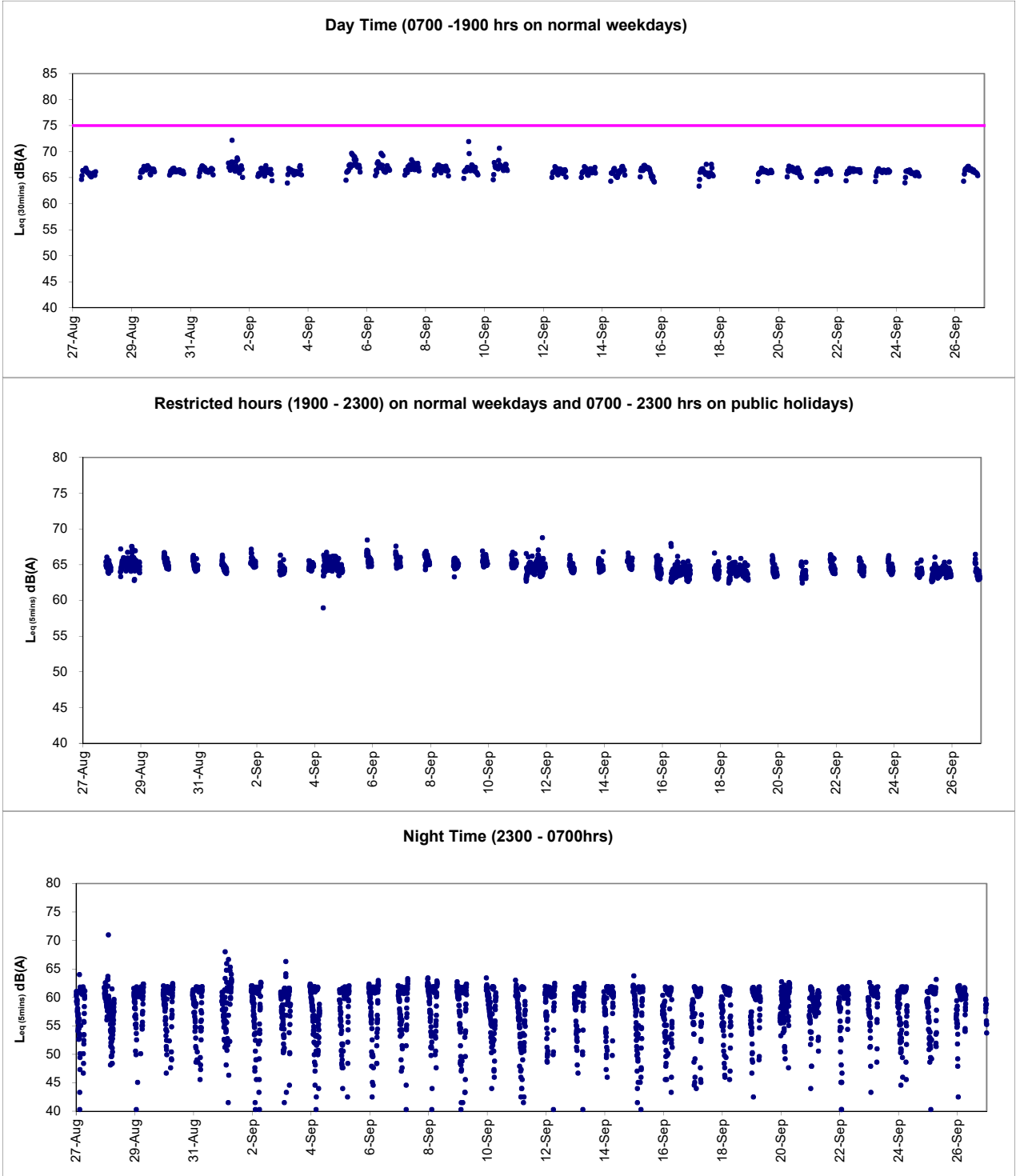
Real-time Noise Data      RTN4 (Causeway Bay Community Centre)

26/9/2016 3:41 57  
26/9/2016 3:46 57  
26/9/2016 3:51 58  
26/9/2016 3:56 58  
26/9/2016 4:01 57  
26/9/2016 4:06 58  
26/9/2016 4:11 58  
26/9/2016 4:16 58  
26/9/2016 4:21 59  
26/9/2016 4:26 57  
26/9/2016 4:31 59  
26/9/2016 4:36 59  
26/9/2016 4:41 58  
26/9/2016 4:46 59  
26/9/2016 4:51 58  
26/9/2016 4:56 59  
26/9/2016 5:01 60  
26/9/2016 5:06 57  
26/9/2016 5:11 58  
26/9/2016 5:16 59  
26/9/2016 5:21 59  
26/9/2016 5:26 59  
26/9/2016 5:31 59  
26/9/2016 5:36 59  
26/9/2016 5:41 59  
26/9/2016 5:46 60  
26/9/2016 5:51 61  
26/9/2016 5:56 60  
26/9/2016 6:01 60  
26/9/2016 6:06 52  
26/9/2016 6:11 56  
26/9/2016 6:16 55  
26/9/2016 6:21 58  
26/9/2016 6:26 58  
26/9/2016 6:31 59  
26/9/2016 6:36 59  
26/9/2016 6:41 59  
26/9/2016 6:46 61  
26/9/2016 6:51 60  
26/9/2016 6:56 60  
26/9/2016 23:01 59  
26/9/2016 23:06 58  
26/9/2016 23:11 59  
26/9/2016 23:16 58  
26/9/2016 23:21 59  
26/9/2016 23:26 59  
26/9/2016 23:31 56  
26/9/2016 23:36 56  
26/9/2016 23:41 55  
26/9/2016 23:46 51  
26/9/2016 23:51 53  
26/9/2016 23:56 51



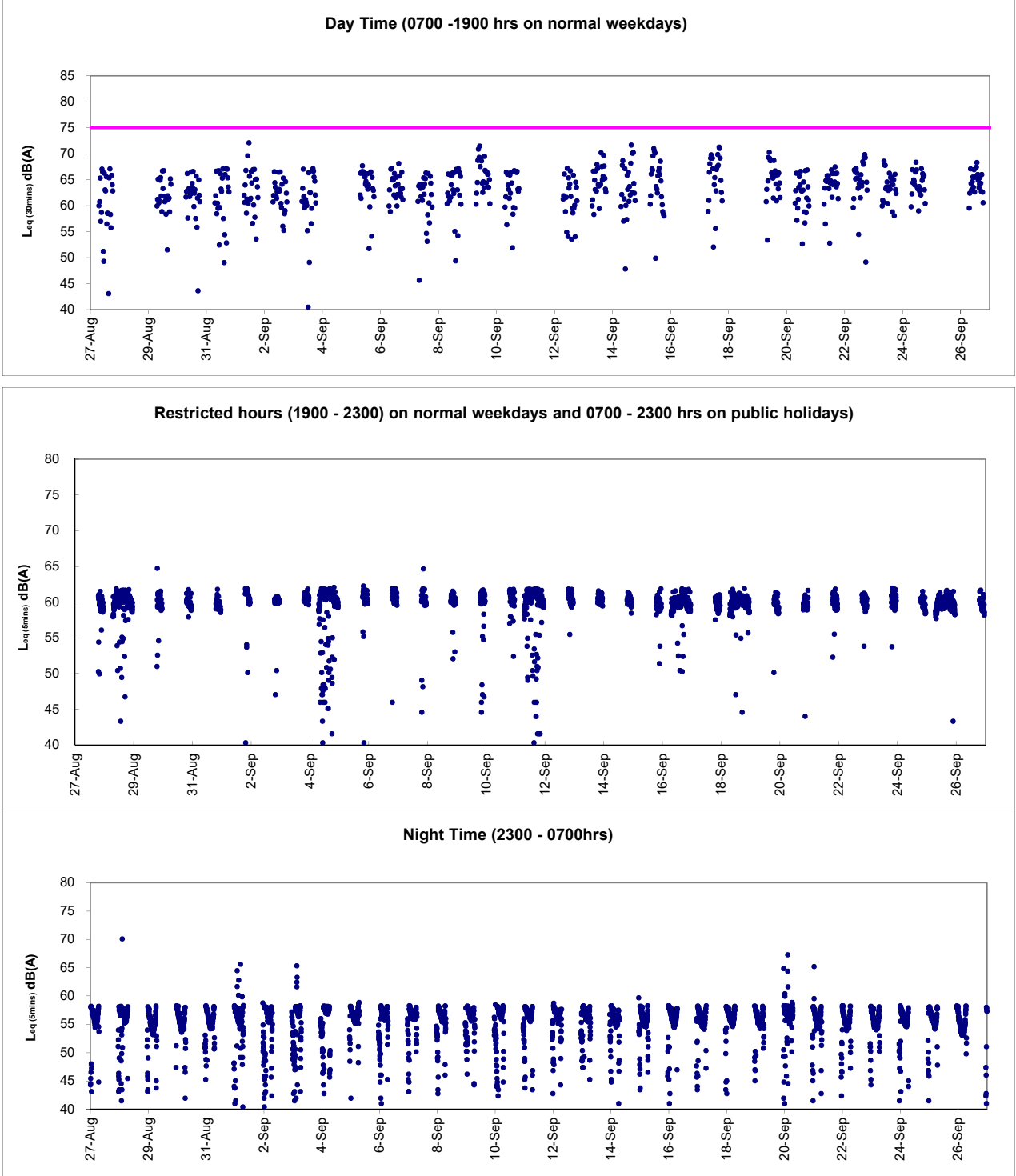


Graphic Presentation of Real Time Noise Monitoring Result (RTN1-Food and Environmental Hygiene Department Depot)



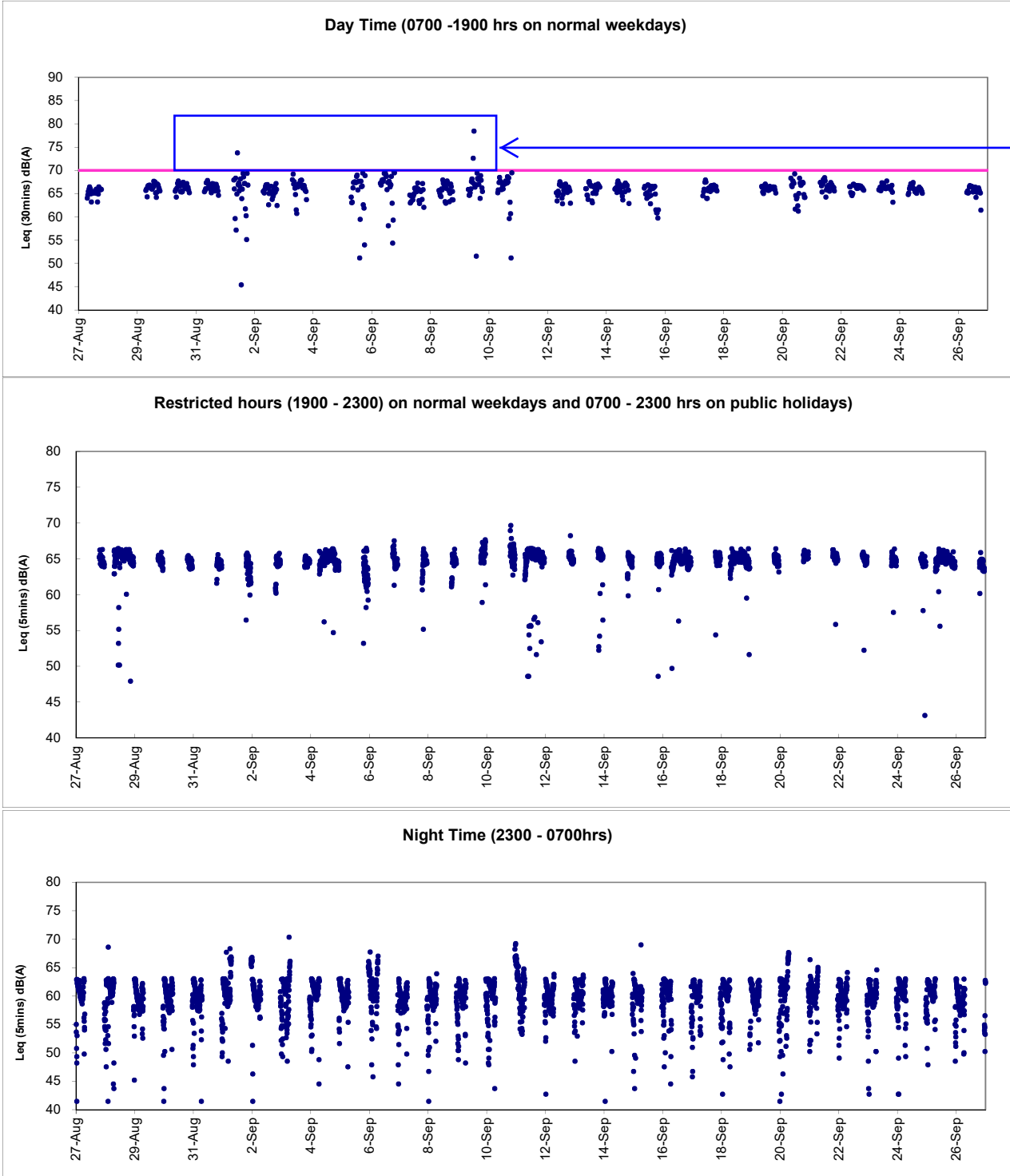


Graphic Presentation of Real Time Noise Monitoring Result (RTN2a- Hong Kong Electric Centre)





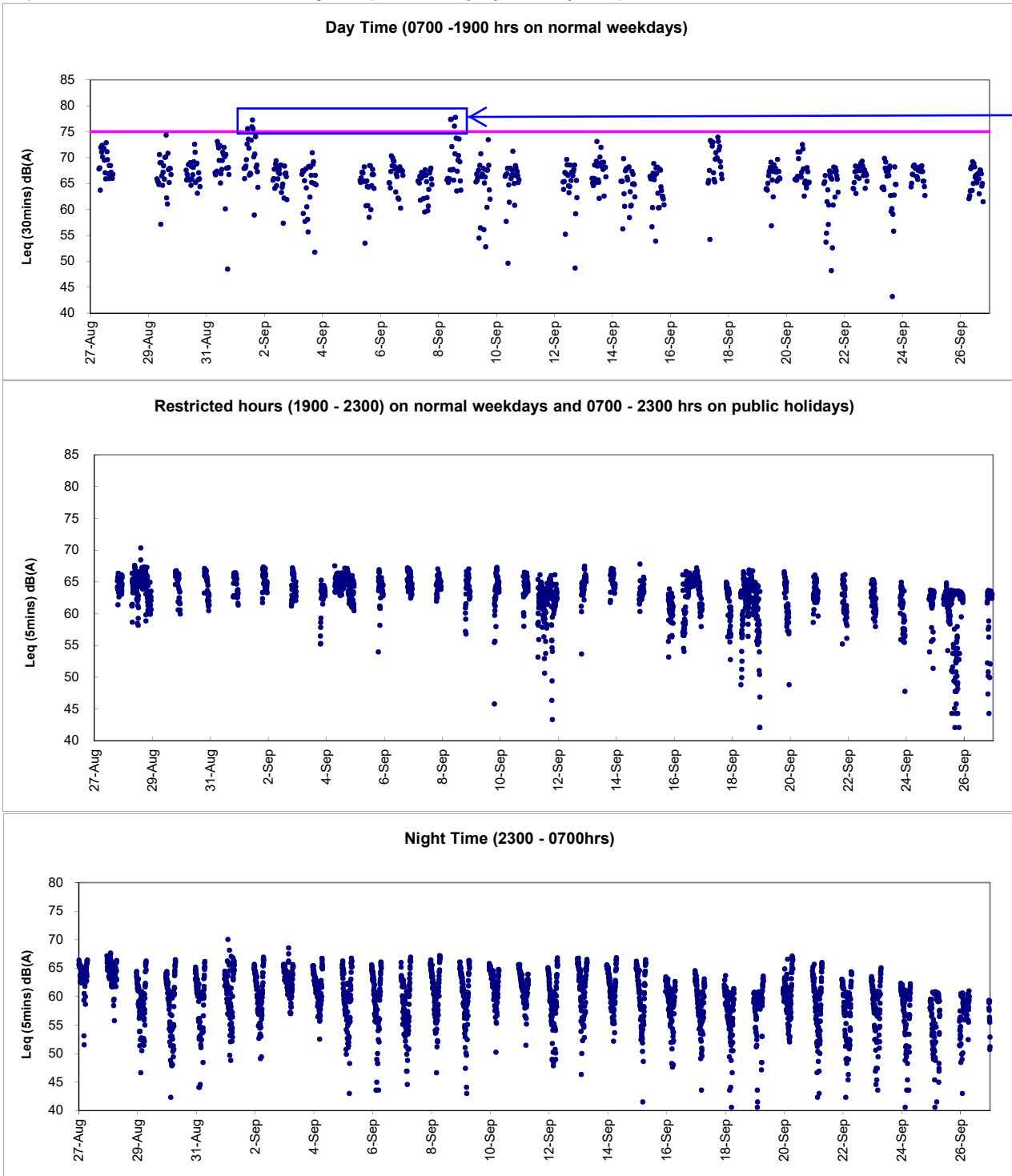
Graphic Presentation of Real Time Noise Monitoring Result (RTN3-Yu Lee Mo Fan Memorial School)



After checking, erection of temporary support frame and dissembling of Lifting Gear were conducted on 01 September during the monitoring period and fixing of decking reinforcement at bridge F5 and dissembling of Lifting Gear were conducted on 09 September 2016 during the monitoring period. No major noise emission is considered of the construction works during monitoring while adverse weather with lightning and thunderstorm was recorded across the monitoring period on 01 and 09 September 2016 at Eastern District and is considered as the major noise contribution. As such, the exceedance were considered as non-Project related



Graphic Presentation of Real Time Noise Monitoring Result (RTN4-Causeway Bay Community Centre)



After checking with the Contractor of HY/2009/19, formwork welding and rebar fixing were conducted on 01 September 2016 during the monitoring period and form work removal, concrete curing, excavation and concrete patching at segment joint were conducted on 08 September 2016. After checking with the Contractor of HY/2011/08, no construction work around the monitoring station was conducted on 01 September 2016 during the monitoring period and hoarding erection was conducted at EVB area on 08 September 2016. No major noise emission is considered for the construction works during monitoring while adverse weather with lightning and thunderstorm were recorded across the monitoring period on 01 and 08 September 2016 at Eastern District and are considered as the major noise contribution. As such, the exceedances were considered as non-Project related.